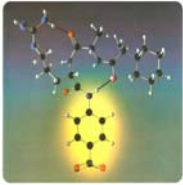


# TECHNOCHROM<sup>®</sup> - CHROMOGENIC ASSAYS



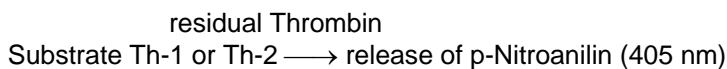
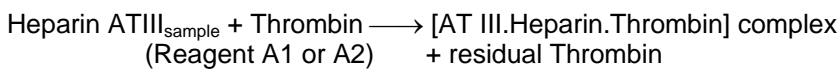
Determination of activity levels of Antithrombin III, Protein C, FVIII:C and C1 Esterase Inhibitor by synthetic chromogenic substrate method

## TECHNOTHROMBIN<sup>®</sup> ATIII modular

Antithrombin present in the sample inhibits the added thrombin in presence of heparin. The residual thrombin is measured by its amyolytic activity on a specific chromogenic substrate.

- ✓ Due to optimized assay conditions minimized interference with heparin cofactor II
- ✓ High reagent stability
- ✓ Excellent accuracy and precision
- ✓ Economical use
- ✓ Adaptation sheets for most common autoanalyzers are available

### TEST PRINCIPLE

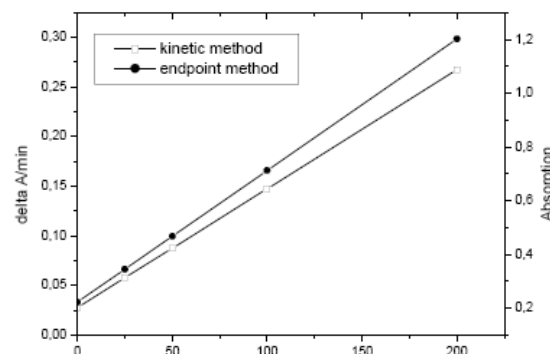
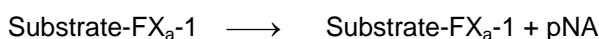
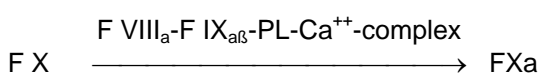
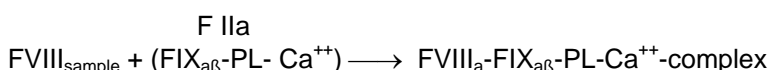


## TECHNOCHROM<sup>®</sup> FVIII:C

FX is activated to FXa by FIXa, Phospholipids and Ca<sup>++</sup> with FVIII:C as cofactor. By using optimal assay conditions the rate of FX activation is proportional to FVIII:C in plasma. FXa is measured by its amyolytic activity on a specific chromogenic substrate.

- ✓ 4 reference standards (cal. against WHO)
- ✓ Assay range 0-200%
- ✓ High reagent stability
- ✓ Excellent accuracy and precision
- ✓ Economical use
- ✓ For plasma samples and concentrates
- ✓ Adaptation sheets for common autoanalyzers are available

### TEST PRINCIPLE

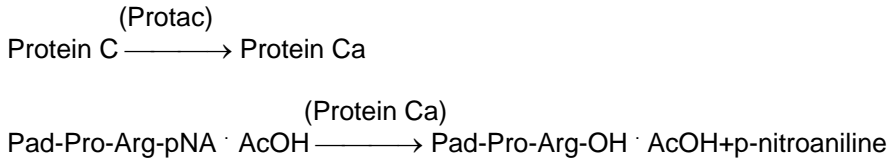


## TECHNOCHROM® Protein C

Protein C is activated by a specific activator and measured by its amyolytic activity on a specific chromogenic substrate.

- ✓ Assay linearity 0 -125%
- ✓ 3 reference standards
- ✓ High reagent stability
- ✓ Excellent accuracy and precision
- ✓ Economical use
- ✓ Adaptation sheets for several analyzers are available

### TEST PRINCIPLE

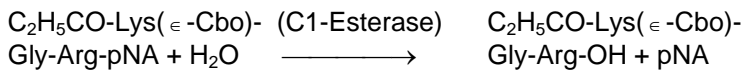
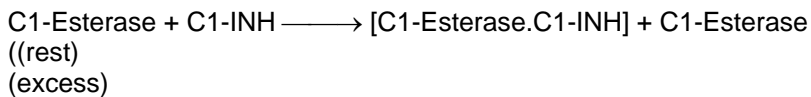


## TECHNOCHROM® C1-Inhibitor

Diagnosis of hereditary angioneurotic edema (HANE).

The C1-esterase inhibitor (C1-INH) is a regulatory protein that functions as an inhibitor of several serine proteases in the complement system, the kallikrein-kinin system, the coagulation cascade and in fibrinolysis.

### TEST PRINCIPLE



- ✓ Assay linearity 20 -120%
- ✓ Simple test performance
- ✓ Heparin insensitive
- ✓ Excellent accuracy and precision
- ✓ Adaptation sheets for several analyzers are available

## Ordering information

### TECHNOCHROM® ATIII modular

REF	5340212	TECHNOCHROM® ATIII modular Reagent A1	2 x 6.5 IU
REF	5340214	TECHNOCHROM® ATIII modular Reagent A1	20 x 6.5 IU
REF	5340217	TECHNOCHROM® ATIII modular Reagent A2	2 x 43 IU
REF	5340219	TECHNOCHROM® ATIII modular Reagent A2	20 x 43 IU
REF	5340011	TECHNOCHROM® ATIII modular Substrate Th-1	2 x 10 µmol
REF	5340016	TECHNOCHROM® ATIII modular Substrate Th-1	20 x 10 µmol
REF	5340207	TECHNOCHROM® ATIII modular Substrate Th-2	2 x 15 µmol
REF	5340209	TECHNOCHROM® ATIII modular Substrate Th-2	20 x 15 µmol

### TECHNOCHROM® FVIII:C

REF	5344101	TECHNOCHROM® FVIII:C	2 x 20 tests
-----	---------	----------------------	--------------

### TECHNOCHROM® Protein C

REF	5341013	TECHNOCHROM® Protein C	30 test
-----	---------	------------------------	---------

### TECHNOCHROM® C1-Inhibitor

REF	5345003	TECHNOCHROM® C1-Inhibitor	30 test
-----	---------	---------------------------	---------

Technoclone GmbH  
Brunner Str. 59/5  
1230 Vienna, Austria  
Tel: +43 1 86373-10  
Fax: +43 1 86373-44

Technoclone Deutschland GmbH  
Hans Bunte Str. 8-10  
69123 Heidelberg, Germany  
Tel: +49 6221 830 441  
Fax: +49 6221 830 437

Technoclone Ltd.  
Eclipse House 7, Curtis Road,  
Dorking/Surrey RH4 1EJ  
Tel: +44 1306 888 777  
Fax: +44 1306 883 883

